

**AT THE LAKE  
WHISPERING WOODS RESORT**

149 HIAWATHA TRAIL  
KIMBERLING CITY, MO 65686

e-mail : [atthelakewoods@centurytel.net](mailto:atthelakewoods@centurytel.net)  
1-800-226-4951 or 1-417-739-4951

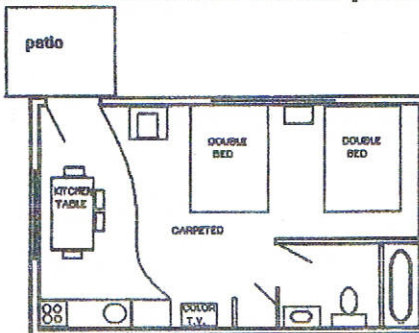
*A unique private resort on a point of Table Rock Lake complete with spectacular views, minutes from area attractions featuring Studio units, 2 bedroom and 4 bedroom housekeeping cabins, 5 bedroom Lodge and Lakehouse and The Suite. Visit us at [www.atthelake.us](http://www.atthelake.us)*

*Whispering Woods Resort is in West Fisher Creek, located directly across the cove from Kimberling Inn, and just under the bridge from Kimberling Marina,*

**OPEN ALL YEAR!**

- \* Basketball with Patio
- \* Fireplaces (gas)
- \* Playground
- \* Deck Furniture
- \* horseshoe pits
- \* Wi-Fi access
- \* Cable Television
- \* Fire pit
- \* 40 x 20' Swimming Pool
- \* Outdoor hot tub
- \* Game Room
- \* Laundry Facilities
- \* Boat ramp and loading dock
- \* 2 Private lighted 12 slip docks w/ swim decks
- \* Charcoal grills

**All housekeeping cabins are fully furnished including heat & a/c, stove & oven, microwave, fridge, all towels & linens. Cribs & highchairs available at no charge, subject to availability. All pricing includes children as does occupancy limits. All units are smoke free and no pets.**



**Studio Unit - Max. of 4 people\***

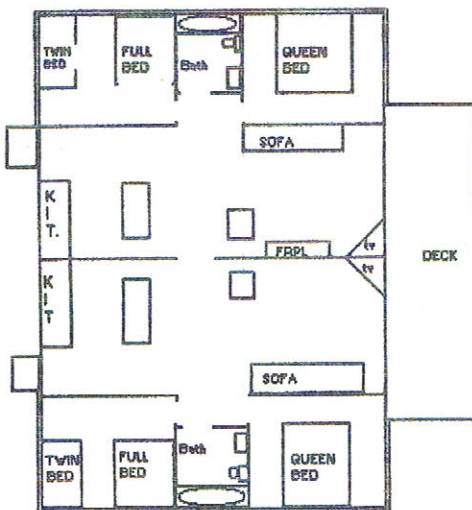
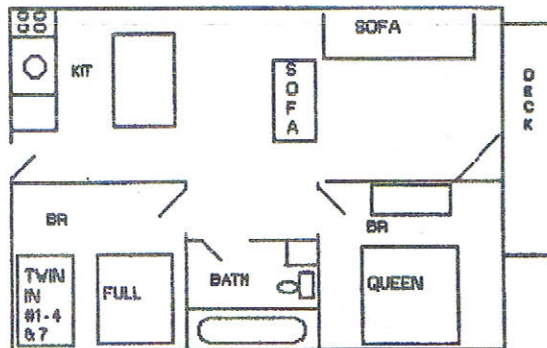
5/26 to 8/15	8/16 to 8/31	9/6 to 01/12
\$525wk or \$90. nt	\$65. nt	\$55. nt

Studio unit is a patio level ground floor walkout with full kitchen & 2 double beds. Picnic table and charcoal grill are outside.  
\*Add'l persons are \$8.00 each per night.  
Weekly rate based on 2 people

**2-Bedroom Cabin - Max. of 5**

5/26 to 8/15	8/16 to 8/31	9/6 to 01/12
\$861.wk / \$135.nt	\$100. nt	\$73. nt

Each unit features 2 private bedrooms, one with a Queen bed, large deck w/ table & chairs. We also have gas fireplaces units available for add'l \$5.00 per night!  
\*Add'l person is \$8.00 per night. weekly rate based on 4 people



**4 - Bedroom Cabin - Max. of 10\***

5/26 to 8/15	8/16 to 8/31	9/6 to 01/12
\$1722.wk / \$255.nt	\$210 nt	\$150. nt

This cabin is 2 -Two bedroom cabins connected by adjoining doors. This gives you 4 private bedrooms, 2 baths, 2 full kitchens and livingrooms a fireplace, and a large adjoining deck, with 2- tables and chairs. 2 charcoal grills are just off of the deck.

\*Add'l persons are \$8.00 each per night.  
weekly rate is based on 8 people

**BOAT RENTALS RATES**

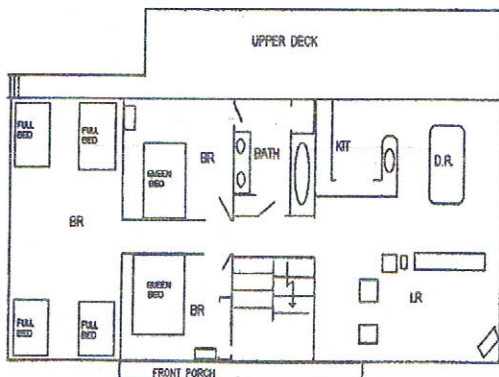
25' Pontoon	W/115 h.p motor, stereo, depth finder	Full Day \$250.00	\$80.00 per hr. (2 hr min)
22' Pontoon	w/ 90 h.p. motor stereo, depth finder	Full Day \$225.00	\$50.00 per hr (2 hr min)
17' Bass Boat	w/ 40 h.p. trolling motor, livewell, depthfinder	Full Day \$100.00	1/2 Day \$ 65.00
16' Fishing Boat w/	25 h.p. trolling motor	Full Day \$ 70.00	1/2 Day \$ 45.00
Golf Cart (advanced reservation & deposit required)		\$135. per week (Includes gas)	
BOAT SLIPS are 24' or 28' w/electric hookup & rent for \$10.00 or \$12.00 per day. (subject to availability)			

## THE LAKEHOUSE - MAX. OF 15 PERSONS

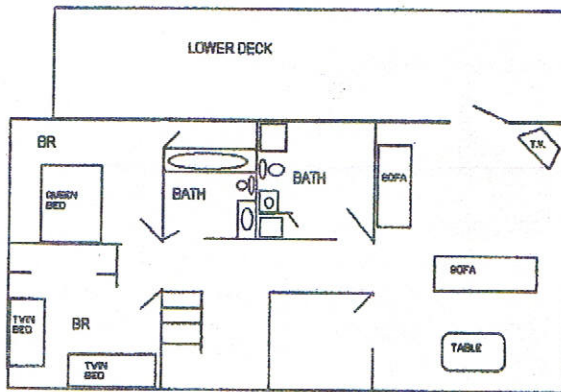
5/26 to 8/15      8/16 to 8/31      9/6 to 01/12  
 \$2310. wk / \$425. nt      \$285.nt\*      \$255.nt \*

The Lakehouse is a 5 bedroom home w/ 9 beds, 3 full baths including a jacuzzi tub. Full kitchen w/dishwasher, central Heat & air, large livingroom and familyroom w/ cable T.V. ( vcr In familyroom), stereo/c.d. player, 2 large decks overlooking secluded forested area (not lakeview) with firepit. A short level walk (130 yds) to the lake where there is a boat ramp, and courtesy dock for swimming. \* based on 12 people  
 Add'l person \$8.00 each per night. Weekly rate is based on 12 people

Lakehouse floorplan - upper level



Lower Level

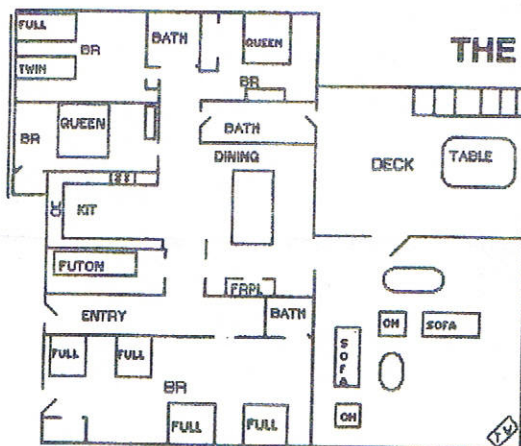


\*\*\*\*\*

## THE LODGE - MAX OF 13 PERSONS

5/26 to 8/15      8/16 to 8/31      8/31 to 01/12  
 \$2240. wk / \$415.nt      \$280.nt\*      \$245.nt\*

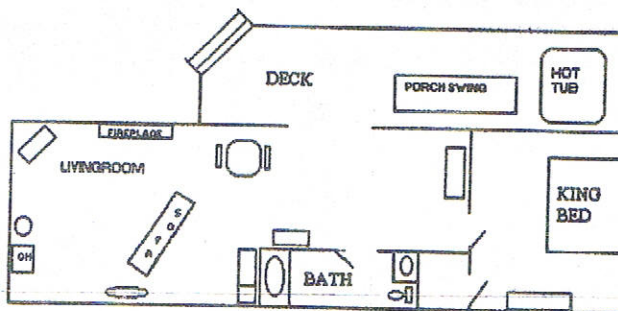
The Lodge is a 5 bedroom one level home with 8 beds / 3 full baths with a large deck overlooking the lake and resort swimming pool. The Lodge has central heat & air, an open kitchen with dishwasher & dining room with oak floors and a fireplace. The living room is 31' x 21' with cable T.V. and stereo c.d. player. \* Weekly rate is based on 12 people  
 \*Add'l persons are \$8.00 each per night\*



## THE SUITE

**\$150.00 PER NIGHT FOR 2**

Pamper yourself in this unique setting with a million dollar lakeview. The suite is located at the owner's headquarters and provides privacy and comfort with excellent accommodations. 32" T.V. w/dvd, King bed, hottub on deck, fireplace, small fridge & microwave. No cooking facilities.



### RESORT POLICY

- Three nights prepayment required within 10 days after making reservations.
- Group reservations may require additional payments. *Remaining balance is due upon arrival.*
- *Prices shown are for cash, check, money orders, or travelers checks. Credit card damage deposit is required for all rentals. must be 25 or older to reserve*
- Minimum stay may be required. We reserve the right to refuse service.
- Check in time is after 3pm, check out by 10am.
- Out of courtesy to all our guests, *no pets are allowed, no exceptions.*
- Occupancy applies to all people and ages. Maximum occupancy is enforced.
- *Reservations Policy: Our reservation policy is intended to be fair to all. Once a reservation is made, that cabin is removed from the market and all other requests for it are refused. You are responsible for all days booked, and there are no refunds for late arrival or early departures. Refunds less a \$50 fee will be made once the a cancelled reservation is fully rebooked.*
- **In Season rates may apply on holidays and holiday weekends**