

For Affordable Family Fun

At The Lake

Whispering
Woods

RESORT

"On Table Rock Lake"
Open All Year

*...for the beauty of the
Ozark Mountains and the
excitement of
Branson attractions!*



40 x 20
Swimming Pool
& 8 Person
Hot Tub



Playground
&
Gameroom



Covered Dock, Private Boat Ramp
& Loading Dock



FOR RESERVATION CALL:

1-800-226-4951

FOR MORE INFORMATION

417-739-4951

E-MAIL: WOODS@TRI-LAKES.NET

WEBSITE:

WWW.ATTHELAKE.US

Minutes from Silver Dollar City,
the Branson Strip, close to Hwy 13 Marina,
Kimberling City golf course and other
lakeside dining and entertainment attractions!

2 & 4 Bedroom



**Lake Front
with Deck**



Spacious



Studio



**Large One
Room**



**with Full
Kitchen**

Lakehouse



**Private, 5 Br.,
3 Ba.**



**...in the woods
near the Lake**

Suite

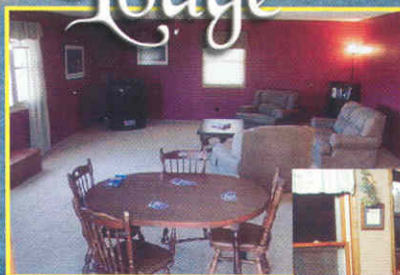


Fireplace

King Bed



Lodge



**Perfect for
Large Families**

**Overlooking
the Pool**



**Hot Tub
on Deck**

**Spectacular
View**



AT THE LAKE

WHISPERING WOODS RESORT

149 HIAWATHA TRAIL
KIMBERLING CITY, MO 65686

e-mail us at: woods@tri-lakes.net
1-800-226-4951 or 1-417-739-4951

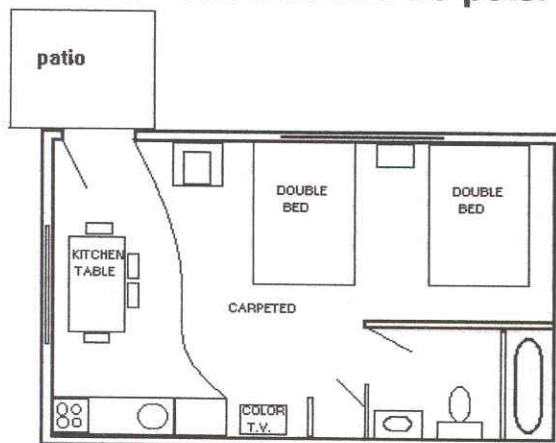
A unique private resort on a point of Table Rock Lake complete with spectacular views, minutes from area attractions featuring **Studio units, 2 bedroom and 4 bedroom housekeeping cabins, 5 bedroom Lodge and Lakehouse and The Suite.** Visit us at www.atthelake.us

Whispering Woods Resort is in West Fisher Creek, located directly across the cove from Kimberling Inn, and just under the bridge from Kimberling Marina,

OPEN ALL YEAR!

- * Basketball with Patio
- * horseshoe pits
- * 40 x 20' Swimming Pool
- * Boat ramp and loading dock
- * Fireplaces (gas)
- * Wi-Fi access
- * 8 person outdoor hot tub
- * 2 Private lighted 12 slip docks w/ swim decks
- * Playground
- * Cable Television
- * Game Room
- * Free paddle boat
- * Fire pit
- * Laundry Facilities
- * Charcoal grills

All housekeeping cabins are fully furnished including heat & a/c, stove & oven, microwave, fridge, all towels & linens. Cribs & highchairs available at no charge, subject to availability. All pricing includes children as does occupancy limits. All units are smoke free and no pets.



Studio Unit - Max. of 4 people*

May 22nd to Sept 2nd Sept 3rd to May 21st 09
\$65.00 / 2 people* \$50.00 / 2 people*

Studio unit is a patio level ground floor walkout with full kitchen & 2 double beds. Picnic table and charcoal grill are outside.

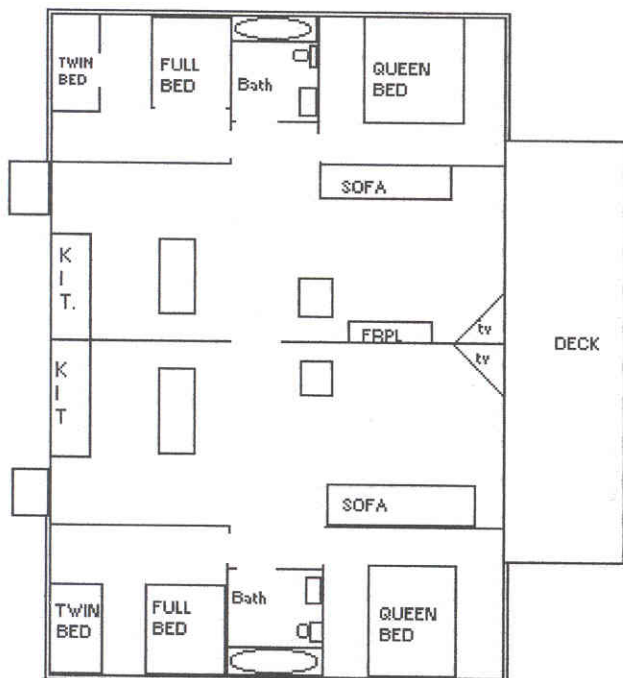
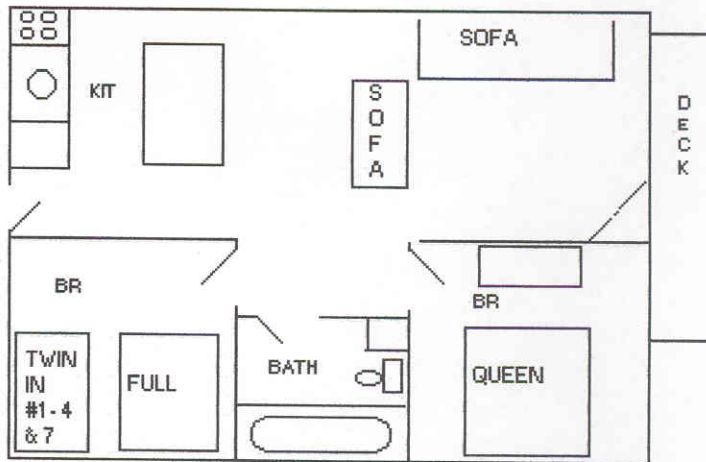
*Add'l persons are \$8.00 each per night.

2-Bedroom Cabin - Max. of 4 or 5

May 22nd to Sept 2nd Sept 3rd to May 21st 09
\$108.00 / 4 people* \$80.00 / 4 people*

Each unit features **2 private bedrooms**, one with a Queen bed, large deck w/ table & chairs. Some units also have gas fireplaces!

*Add'l person is \$8.00 per night.



4 - Bedroom Cabin - Max. of 10

May 22nd to Sept 2nd Sept 3rd to May 21st 09
\$216.00 / 8 people* \$160.00 / 8 people*

This cabin is 2 -Two bedroom cabins connected by adjoining doors. This gives you 4 private bedrooms, 2 baths, 2 full kitchens and livingrooms and a large adjoining deck, with 2- tables and chairs. 2 charcoal grills are just off of the deck.

*Add'l persons are \$8.00 each per night.

BOAT RENTALS RATES

25' Pontoon	W/115 h.p motor, stereo, livewell,	Full Day \$250.00	\$50.00 per hr. (2 hr min)
19' Ski Boat	w/140h.p. i.o. stereo, skis	Full Day \$250.00	1/2 Day \$175.00
17' Bass Boat	w/ 40 h.p. trolling motor, livewell, depthfinder	Full Day \$100.00	1/2 Day \$ 65.00
16' Fishing Boat	w/ 25 h.p. trolling motor	Full Day \$ 70.00	1/2 Day \$ 45.00
Golf Cart (advanced reservation & deposit required)		\$125. per week	
BOAT SLIPS are 24' or 28' w/electric hookup & rent for \$10.00 or \$12.00 per day. (subject to availability)			

THE LAKEHOUSE - MAX. OF 15 PERSONS

May 22th to Sept 2nd

\$310.00 / 12 people*

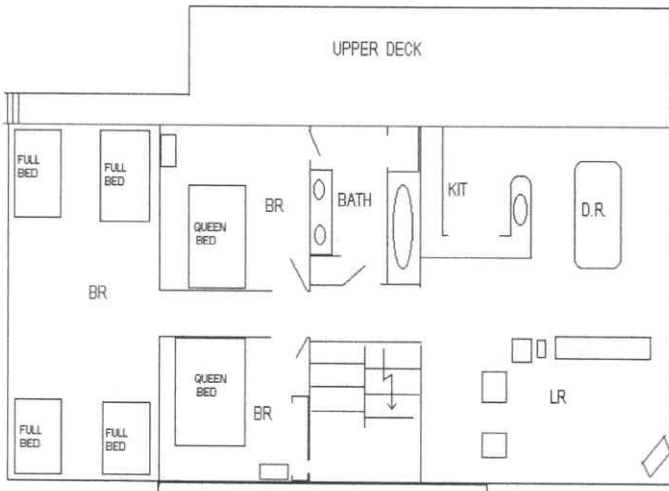
Sept 3rd to May 21st 2009

\$255.00 / 12 people*

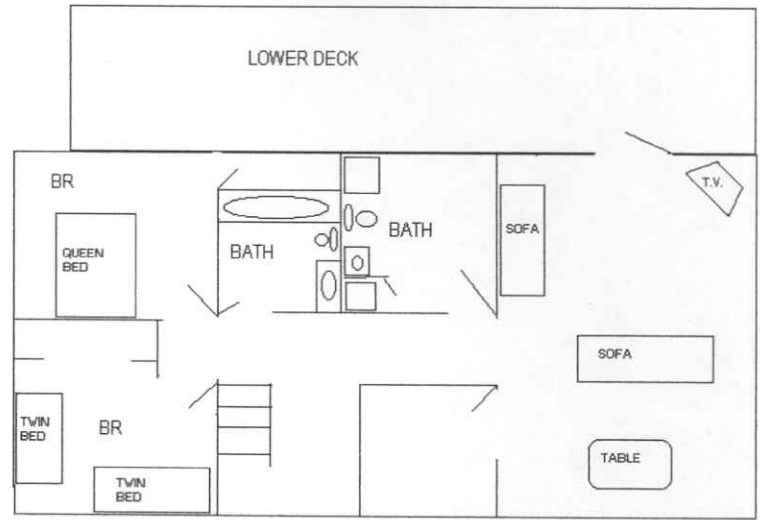
The Lakehouse is a 5 bedroom home w/ 9 beds, 3 full baths including a jacuzzi tub. Full kitchen w/dishwasher, central Heat & air, large livingroom and familyroom w/ cable T.V. (vcr in familyroom), stereo/c.d. player, 2 large decks overlooking secluded forested area (not lakeview) with firepit. A short level walk (130 yds) to the lake where there is a boat ramp, and courtesy dock for swimming.

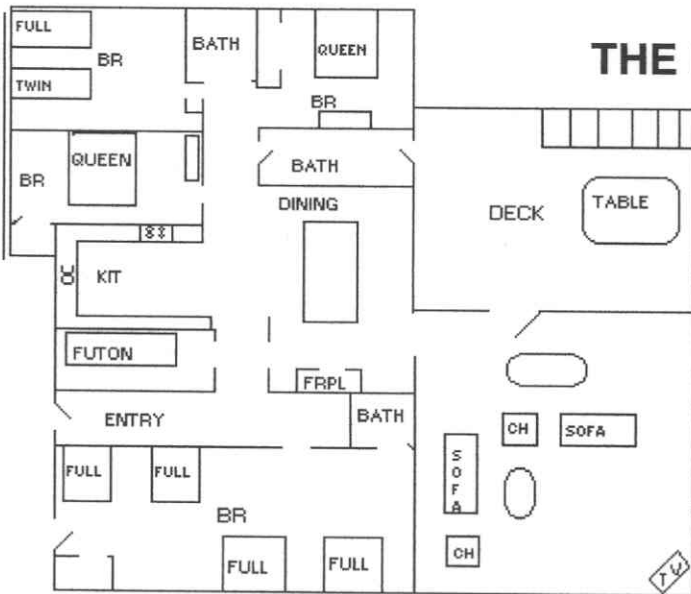
*Add'l person \$8.00 each per night.

Lakehouse floorplan - upper level



Lower Level





THE LODGE - MAX OF 14 PERSONS

May 22nd to Sept 2nd

\$305.00 / 12 people*

Sept 3rd to May 21st 09

\$245.00 / 12 people*

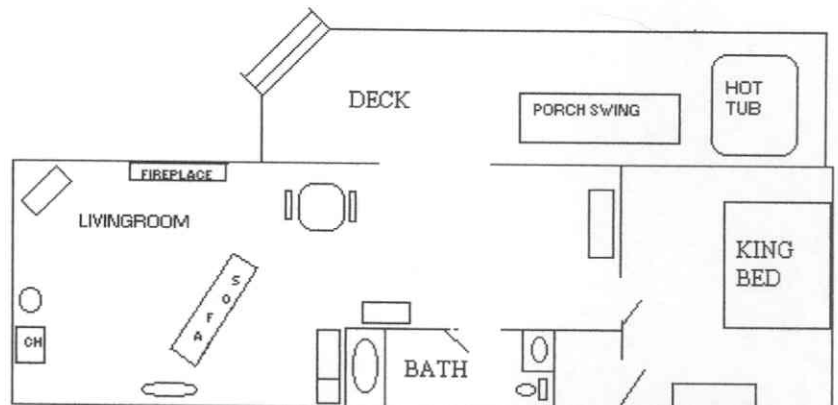
The Lodge is a 5 bedroom one level home with 8 beds / 3 full baths with a large deck overlooking the lake and resort swimming pool. The Lodge has central heat & air, an open kitchen with dishwasher & dining room with oak floors and a fireplace. The living room is 31' x 21' with cable T.V. and stereo c.d. player.

*Add'l persons are \$8.00 each per night.

THE SUITE

\$140.00 PER NIGHT FOR 2

Pamper yourself in this unique setting with a million dollar lakeview. The suite is located at the owner's headquarters and provides privacy and comfort with excellent accommodations. 32" T.V. w/dvd, King bed, hottub on deck, fireplace, small fridge & microwave. No cooking facilities.



RESORT POLICY

- Two nights deposits required within 10 days after making reservations (3 nights deposit on houses). Group reservations may require additional deposits. Remaining balance is due upon arrival.
- Prices shown are for cash, check, money orders, or travelers checks. Credit card damage deposit is required for all rentals.
- Minimum stay may be required. We reserve the right to refuse service.
- Check in time is after 3pm, check out before 10am.
- Out of courtesy to all our guests, **no pets are allowed, no exceptions.**
- Occupancy applies to all people and ages. Maximum occupancy is enforced.
- Reservations Policy: Our reservation policy is intended to be fair to all. Once a reservation is made, that cabin is removed from the market and all other requests for it are refused. There are no refunds for late arrival or early departures. Deposits are refunded less \$25 for cancellations occurring 60 days prior to reservation date. For cancellations less than 60 days, a refund less \$25 will be made once the reservation is fully rebooked. **No refunds on Lakehouse or Lodge unless fully rebooked**
- Full rates apply on holidays and holiday weekends